

INTELLECTUAL PROPERTY (IP) Advice

1. **The Intellectual Property Office (IPO)** - the official government body responsible for intellectual property rights in the UK.

For more information:

<https://www.gov.uk/government/organisations/intellectual-property-office>

Intellectual property clinics:

<https://www.gov.uk/government/news/intellectual-property-clinics>

Events organised by the IPO which have an intellectual property or business focus: <https://www.gov.uk/government/publications/ipo-events-calendar>

2. **The Chartered Institute of Patent Attorneys (CIPA)**

For more information: [Why Should I Protect My Ideas? - CIPA](#)

The Chartered Institute of Patent Attorneys holds regular Clinics at a number of sites around the UK to provide free basic advice to unrepresented innovators who are at the early stages of developing an idea. The Clinics are all given by a Registered Patent Attorney.

<https://www.cipa.org.uk/ip-clinics/>

Events organised by the CIPA:

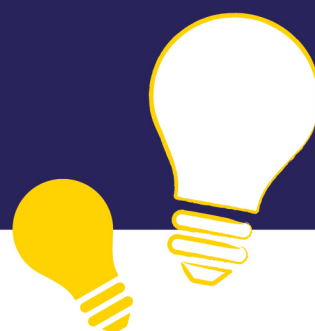
<https://www.cipa.org.uk/events/>

3. **The Chartered Institute of Trade Mark Attorneys (CITMA)** - a professional membership organisation with the power to shape law and practice – nationally and internationally.

For more information: <https://www.citma.org.uk/>

The CITMA run free trade mark advice clinics every month in London:

W: oxlepbusiness.co.uk
T: 01865 897181
E: business@oxfordshirelep.com



<https://www.citma.org.uk/trade-marks-ip/need-advice/free-advice-clinics.html>

Events organised by the CITMA:
<https://www.citma.org.uk/events.html>

4. The British Library – Business and IP Centre

For more information: <https://www.bl.uk/business-and-ip-centre#>

The British Library offers a wide range of free or low-cost workshops and events: <https://www.bl.uk/business-and-ip-centre/workshops-and-events>

5. Institute of Professional Representatives before the European Patent Office(EPI) - the professional body representing all European Patent Attorneys.

For more information: <https://patentepi.com/en/>

6. Search for Professional Representatives before the European Union IntellectualProperty Office (EUIPO) that governs European Union Trade Marks and Registered Designs: <https://euipo.europa.eu/eSearch/>

THE PATENT BOX

The Patent Box enables companies to apply a lower rate of Corporation Tax to profits earned after 1 April 2013 from its patented inventions.

For more information: <https://www.gov.uk/guidance/corporation-tax-the-patent-box>

The information presented is accurate at the time of writing. The list of schemes, programmes and organisations is not intended to be exhaustive but affords an illustration of the resources that may be available to SMEs. Please check directly with the organisations listed for up-to-date information and let us know of any inaccuracies or missing programmes that you think are relevant. The list is not presented in any order of priority and descriptions reflect the providers' own promotion.

End of Listing.

W: oxlepbusiness.co.uk
T: 01865 897181
E: business@oxfordshirelep.com

