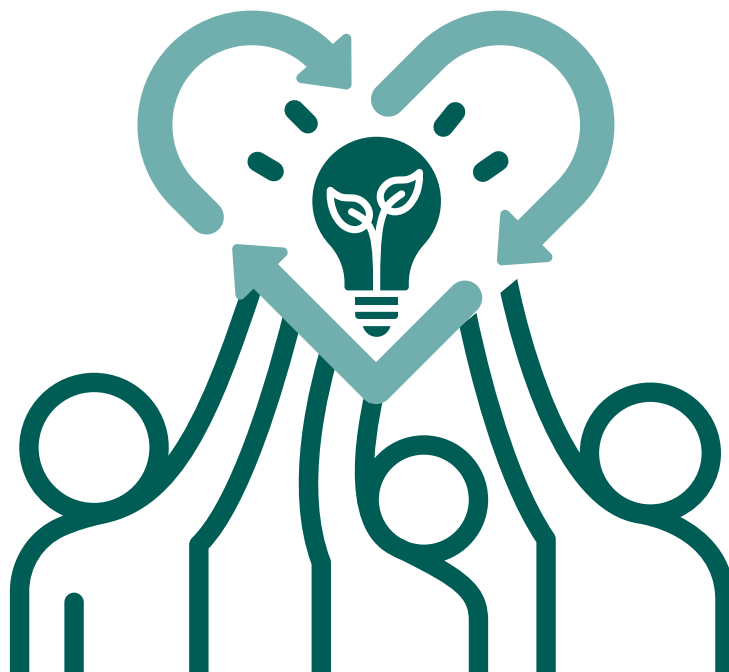




Oxfordshire Good Waste Charter



Setting a standard for good waste practices for individuals and businesses in Oxfordshire in 2024.



WE DECLARE OUR VISION FOR

individuals

- Saving through sharing and loaning of items to limit one off purchases.
- Creating more usable space in households for items that are important.
- Helping people understand the carbon impact of their consumer choices, enabling them to make informed decisions.

community

- Connecting people through events such as repair cafes, clothing swaps, and gift swaps.
- Providing space for people to share their skills and knowledge to teach others how to repair and repurpose items.
- Reducing local pollution by lowering the need for carbon-emitting journeys and volume of items in landfill.

the planet

- Reusing, recycling and repurposing consumable goods prevents items ending up in landfill.
- Helping to conserve local ecosystems that can be damaged by pollutants and emissions from landfill.
- Lessening the need for raw materials to limit the human impact on the planet.

WE CALL UPON INDIVIDUALS TO



rethink

If you aren't likely to use an item more than once, ask to borrow from someone, look for a local 'library of things' to see if they have one (like Oxford Party Library, or SHARE Oxford) to hire items.

reduce

Reduce the amount of non-reusable items you use. Say 'no' to a plastic straw when you order a drink. Take a reusable bag to the shops. Buy loose fruit and veg.

refuse

Refuse to buy products that come with unnecessary or non-biodegradable or non-recyclable packaging. Be mindful of what you buy.

reuse

Use things again! If you no longer need an item, donate it to a charity, sell it, or use [Waste Wizard](#) search tool to find different options for an item, rather than throwing it away.

repair

Repairing broken items can save you money, and save the item from landfill. If you are unsure how to repair you could try a local business that offers repairs, or find a local repair cafe.

recycle

If an item can't be reused or repaired, recycle it if possible. Ask your local district council to find out what and where you can recycle locally.

rot

Rotting items takes time, but also produces material that can be reused in gardens, and is the best way to deal with organic materials.



WE CALL UPON BUSINESSES TO

Reduce the amount of single-use materials you use.
Reward customers for bringing re-usable containers.

reduce

Save money in procurement by liaising with another local
business to re-use their waste materials. Could anyone
re-use your waste?

reuse

Get ahead of "right to repair" legislation by designing
your products so that they can be repaired. Work with
local repair cafes to keep your items in people's homes
longer!

repair

Only use materials that can be recycled.

recycle

If you work with food, consider how you could keep your
waste in circulation by working with compost companies
or community allotments. If that's not possible, use
industrial composting schemes, however most of those
use incinerators.

rot

Businesses may also choose to help build a greater understanding of local waste streams, and assist in inspiring governments, the community, and regenerative systems by filling out the [Local Waste Streams Survey](#). WISH can also use this information to advise businesses on ways to reduce their carbon footprint and reduce costs.

Before buying new, ask yourself these quick questions:

- Do I really *need* this?
- Could I *borrow* this?
- Can I make this with what I *already have*?
- Can I make this from things I *buy or find second-hand*?
- Can I *buy* this second-hand?

See [here](#) WISHs map of where to borrow or buy second-hand or in Oxfordshire.

If you must buy new, consider:

- *Who else* could make use of this item right now, how can I share it?
- What is the *useful lifespan* of this item?
- How will I ensure this item *stays in circulation* after it is no longer useful to me?

Oxfordshire residents can use the Oxford County Council's [Waste Wizard](#) search tool to find different options for an item they no longer want, rather than throwing it away.

Case study: Rear Mudguard

Q. DO I REALLY NEED THIS?

A. Yes! I'm getting really muddy on my commute



Q. COULD I BORROW THIS?

A. Not really, people keep these attached to their bikes!



Q. CAN I MAKE THIS WITH WHAT I ALREADY HAVE?

A. I have some materials but would need something plastic...



Q. CAN I MAKE THIS FROM THINGS I BUY OR FIND?

A. Yes! A neighbour gave me a large milk bottle and some cable ties.



cherwell
collective

Oxfordshire
Good Waste
Charter



Oxfordshire
Good Waste
Charter



cherwell
collective 

